

User manual for T-TEC & T-TEC RF data loggers

Version 14 for Windows

Temperature Technology
263 Gilbert Street
Adelaide SA 5000
AUSTRALIA

Phone: (061) (08) 8231 1266

Fax: (061) (08) 8231 1212

sales@t-tec.com.au

Acknowledgments

Some names used in this manual are trademarks. Text and pictures are made with care. The authors and editors can take no legal responsibility for errors or their consequences.

The installation program has kindly been supplied by JRSoftware.

The software package includes the Temp Report System program for RF data loggers and all its utilities is protected according to Australian and international laws. It remains the property of Temperature Technology. A valid licence is needed to use the programs. The details of the licence is included with the distribution material.

Illegal copying and marketing are theft of property and will be pursued according to copyright laws.

All rights reserved. Unlicensed copying of this manual, or any part of it, in any way at all including photographic reproduction and storage on electronic media is not allowed.

Preface

Version 14 is the Windows version of the T-TEC program for data loggers and contains improvements over the former versions.

Version 14 supports data loggers types T-TEC, T-TEC RF, 501, type 6 and 7, with serial numbers starting with A, B, C, E, F, G, H, Y, P and V.

The software also supports the iButton data loggers models DS1921, DS1922 and DS1923. It also supports the TempTec Reader for the iButtons.

We would like to thank our customers for their proposals for improvements to the program. These suggestions have been most helpful and are implemented as far as we could.

Any further suggestions to improvements to the program will be most welcome.

This manual contains instructions for installation and configuration of the program and some notes and examples for the use of the program. There is no detailed description of the functions in the printed manual as the program contains an extensive 'Help' file with all details. This manual is also 'online'. Click on 'Help' to access the information.

The help file also contains a small tutorial to ease the first understanding of the programs.

Any new information, not available at the printing of this manual, is included in a text file, 'Readme.txt'.

Version 14 works with XP, Win2000, Vista and Windows 7, Windows 8. At time of printing, Windows 9 has not been released.

Contents

User manual for T-TEC & T-TEC RF data loggers

Acknowledgments	ii
Preface	iii
Chapter 1: Installation	1
Upgrades	1
Installation & Configuration	1
Installing the T-TEC Software	2
Program configuration	8
Configuration for iButton data loggers	9
Configuration for a TempTec-R Reader	9
In case of errors	10
Errors in Configurations	10
To start the program	10
Chapter 2: Operating a T-TEC data logger	11
Communication with the data logger	11
To read the T-TEC logger	11
To start the logger	14
Tutorial	15
Chapter 3: Operating a T-TEC RF data logger	16
Communication with the data logger	16
To start the T-TEC RF data logger	16
To read the T-TEC RF data logger	18
Chapter 4: How the system works	19
Data Compression	19
The Files - T-TEC Logger	20
Code of Federal Regulations title 21 part 11 (US)	21

Data logger with external sensor	21
Sensor files (.SDA files)	21
Defective Sensors	22
Relay output	22
Number of measurements for a logger	23
Logging Intervals	23
Logging duration at different intervals	24
Stop logging	25
Erasure of data in memory	25
More loggers can work together	25
Printing and export of files	26
Saving the graph for inclusion in reports or email	26
Chapter 5: Batteries	28
How long can the battery last?	28
Expected battery life	28
Current battery voltage	28
Replacing batteries	29
Access to the batteries	29
Logger reset	30
Chapter 6: Program facilities	31
'Zoom' & 'Plot'	31
Measurements from a freezer	33
Store room temperatures	42
Index	46

Chapter 1: Installation

When you have purchased your software, please fill out and return the registration form to receive your key by return email. In some cases, the key file has already been incorporated into the CD. The CD will be marked with an additional 'K'.

Version 14 is supplied on a CD with an installation program to make the installation easier. The CD also contains data sheets for some of our products and a copy of this manual in PDF format.

Upgrades

When you have your licence key, you can upgrade the software with a new version. To receive your software key, please provide the serial number of the software and the name you would like the software licensed to and we will forward a key to you.

The key is a small file which should be copied to the same directory where the T-TECW program resides.

Installation & Configuration

*The software is best installed **before** connecting devices to the computer.*

The T TECW software supports:

- T TEC RF data loggers
- T TEC data loggers
- TempTec 816 data loggers
- iButton data loggers
- TempTec reader for iButtons.

The user can choose to install programs to support one or more of the devices. We recommend to install all shown programs.

Installation is divided into three parts: Installation of software, installation of necessary drivers and configuring of the programs.

The installation program will work for Win XP/VISTA/7/8. Windows 9 has not yet been released.

Installing the T-TEC Software

Please close all other programs first.

Do not connect cables to your computer yet.

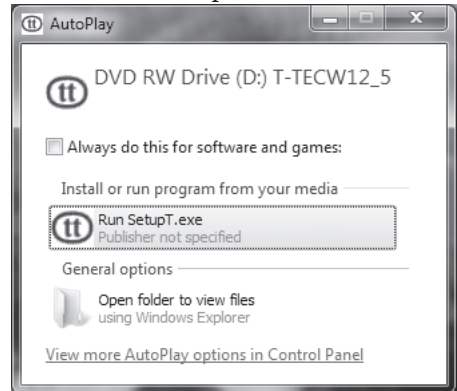
It is possible to install the software either from the supplied CD or from a download via the website. Installing from the download from the website begins from the 'Install Now' section.

Installing

When the CD is inserted, the CD will produce a window, similar to the one on the right, and will highlight, 'Run SetupT.exe'. Click on 'Run SetupT.exe'.

If the dialog box does not appear, go to 'Start'. Click 'Computer' in the right field. Select DVD/CD drive and double click on the program, 'SetupT.exe'.

This program will install the software — please follow the instructions below for operating systems Win98 through to XP from 'Install Now'



If a dialog box titled 'User Account Control' appears that asks you, "Do you want to allow the following program from an unknown publisher to make changes to this computer? Program name: SetupT.exe", click on 'Yes'.

Install Now

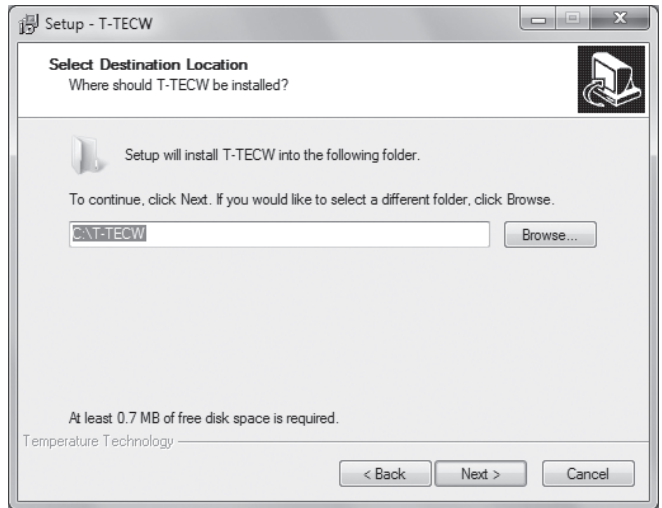
Installation starts with a Welcome screen.



Click 'Next'.

Select Destination

Choose Drive to install the program in:



The default is the C Drive.

Click 'Next'.

Select components

The T-TEC program has 5 components. It is easiest to just install them all.

You will need:

The T-TEC Graph viewer

The Device drivers

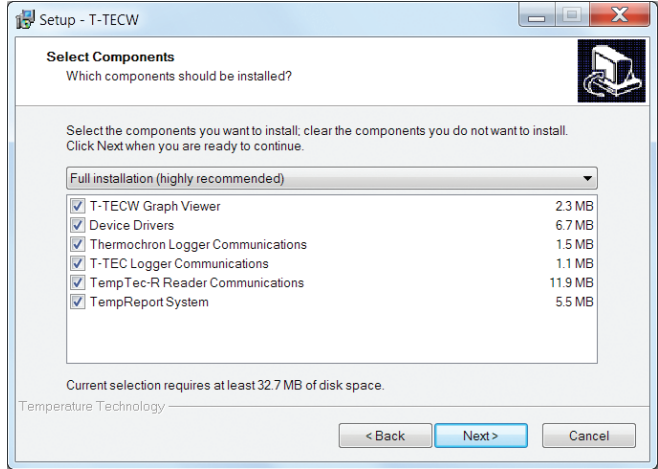
and **at least one** of the following communications programs:

T-TEC Logger communications

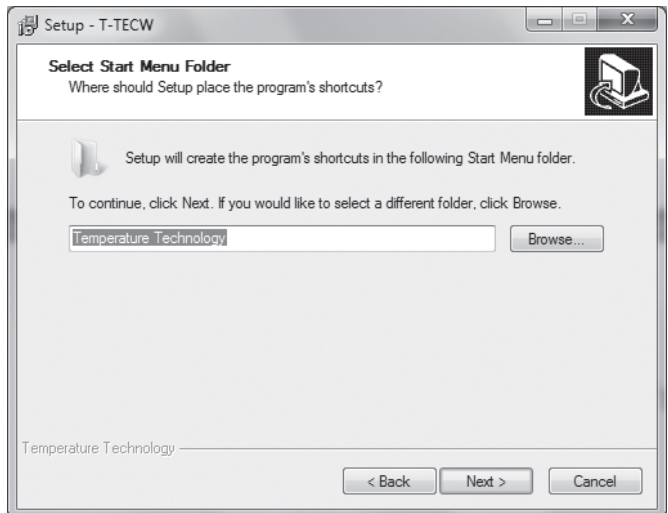
T-TEC RF Logger communications

iButton communications

TempTec-R Reader communications



Start menu folder



Click 'Next'.

Additional tasks

Select icons for your desktop. Again it is easy to leave it as default where all is selected.

Icons you will need:

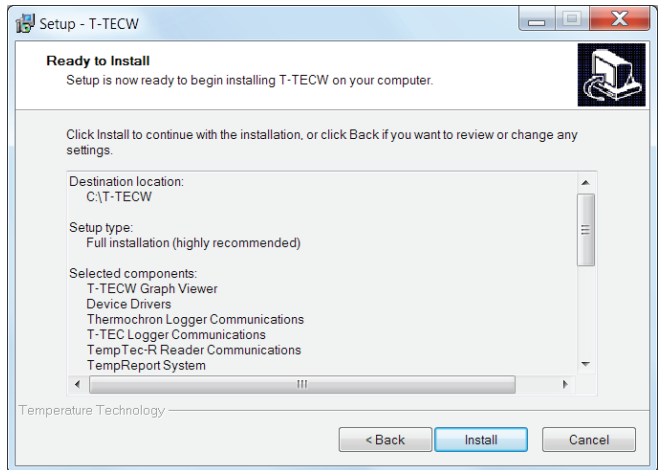
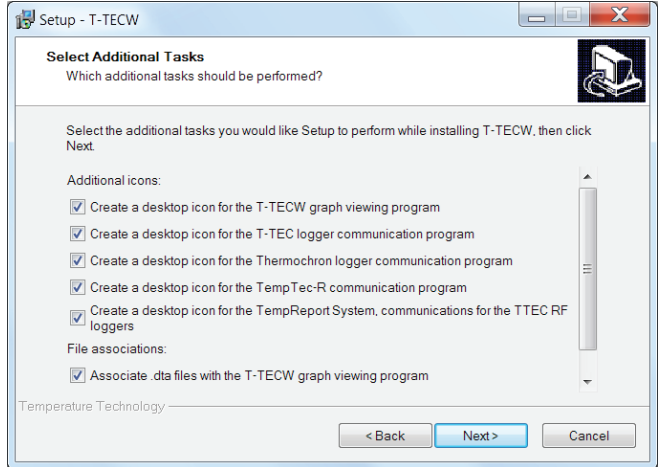
T-TECW Graph Viewer.
From there you can access both iButton and T-TEC data logger communications programs.

If you have the TempTec Reader, you will need the icon for it as well.

If you have wireless data loggers, you will need the icon for TempReport also.

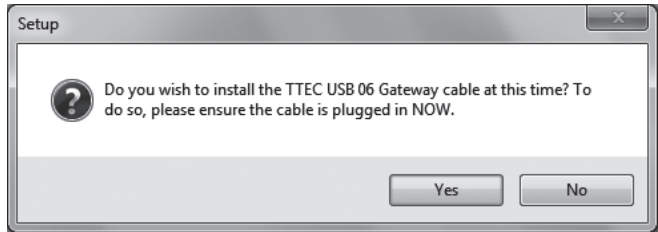
Ready to install

Click: 'Install' if you are happy with your choices or 'Back' if you want to change something.



USB Gateway 06 installation

The T-TEC USB Gateway 06 is a new cable, replacing the T-TEC USB 02 cable. It looks very similar but needs a new version of software to operate.



If you do not have this cable, you do not need to install it, so you may click 'No'.

Should you have this cable and wish to install it, you will need to plug in the cable at this point and click 'Yes'.

If you are upgrading, you do not need to reinstall the driver and so may click 'No'.

Device Driver Installation

Device Driver Installation Wizard will appear each time to install the drivers for the new USB cable, the older USB cables and the iButton drivers. Agree



Click 'Next'

Device Driver Installation Completion

This dialog box appears each time one of the drivers has finished installing.



Click 'Finish'.

Completing set-up



Click: 'Finish'

For cables other than the T-TEC USB Gateway 6, please connect the interface adaptor to the computer now and the device to the interface cable. If you install for more than one device, then connect one device at a time.

Installation of USB driver for T-TEC USB 02

The drivers have been pre installed for Win XP and newer versions when the software was installed to make the process easier. Connect the cable and the logger/reader to an USB port on the computer. The Windows system will detect the adaptor and either install the drivers automatically or start the 'Add New Hardware Wizard'.

If asked if you want to connect to Windows update, tick 'No'.

Click 'Next' to continue.

The PC will ask you 'What do you want Windows to do?'

Please select '**Search for the best driver for your device**'. For WinXP and newer versions, the driver is now found automatically.

Click 'Next' and the driver will be installed.

Program configuration

All Communications programs must be configured so the program can know which type logger is used and which port it is connected to on the computer. Configuration is most easily done first time the program is used.

Configuration for a T-TEC RF data logger

Connect your Gateway to your computer and open the 'Temp Report System' program. This program should automatically detect the Gateway. Click 'Check Gateway' to ensure this has been found. If the response is that the Gateway is undetected, then see Troubleshooting in the online help.

Configuration for a T TEC data logger

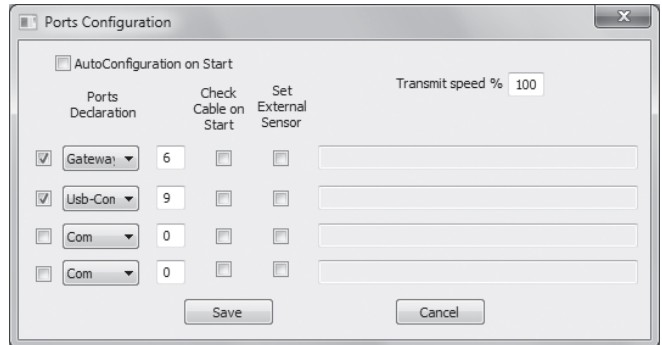
Connect both a T-TEC data logger and a USB cable, and open the T TEC data logger communications program.

The program will now scan the ports on the computer and try to detect which adaptor is connected to which port.

The result will be shown in a window **'Port Configuration'**. If one of the four small boxes to the left is ticked, then the program has found the adaptor and is configured.

Then un-tick the small box at top: **'Auto configuration at start'** to avoid having the program search each time it is opened.

Click **'Save'**. The program is now ready to use.



If there are no ticks in any of the four boxes at the left, then the auto detect procedure could not find the interface adaptor. Please see Troubleshooting in the help file for the T-TEC program for possible solutions.

Configuration for iButton data loggers

To configure and use iButtons, please load the software called, 'Thermochron Logger'. When loaded, the software is now called 'iButton Communications'.

You can open the iButton Communications software in two ways: double click the icon on the desktop, or go to **'Start' > 'All Programs' > 'Temperature Technology' > 'Thermochron Logger'**.

The program will automatically detect the presence of the adaptor and attached iButton data logger. If this does not occur, please see the section on 'Troubleshooting' or contact Temperature Technology for technical support.

Configuration for a TempTec-R Reader

To configure and use TempTec Readers, please load the software called, 'TempTecR Communications'. You can do this in two ways: double click the icon on the desktop or go to **'Start' > 'All Programs' > 'Temperature Technology' > 'TempTec-R Communications'**.

The software will automatically find the port that the TempTecR is connected to. If not, try using 'Port Configuration' and check if there is another port listed.

If the plugged in TempTec-R cannot be found, please see the section 'Troubleshooting', or contact technical support at Temperature Technology.

In case of errors

If needed, simply re-install the program(s). There is no need to un-install anything before re-installing.

Errors in Configurations

The configuration of the communications programs may be repeated later if needed.

To start the program

Double click the icon for the required program:

To start the program: Double click the icon for the required program:



T-TECW Graph Viewer The graphic program for handling of data from the data loggers and the TempTec Reader.



Thermochron Logger is the communications program for iButton loggers.



T-TEC Logger is the communications program for the T-TEC logger.

Note: Both data logger communications programs can be accessed from the T-TECW program and this may be the most convenient way.



TempTecR communications program is the communication program for the TempTec Reader.



TempReport program is the communications program for the T-TEC RF wireless data loggers.

Chapter 2: Operating a T-TEC data logger

This section is the same as 'express help' in the installed manual - (Press F1 to see this) - it will show how to start the logger and read the logger. Following the tutorial in the on-line manual is recommended.

Communication with the data logger

The T-TEC interface cable must be connected to the port which has been configured as described in chapter 1.

Now connect the data logger to the cable. This may be done at any time **unless the red stop sign is displayed**.

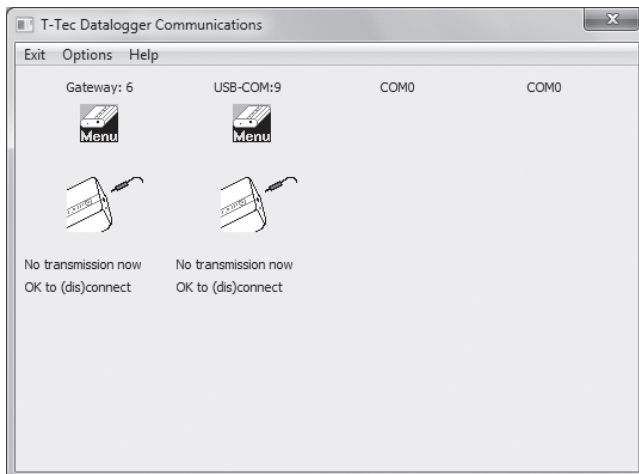
*This sign indicates that active transmission between the computer and the data logger is taking place. It is very important to **not** connect or disconnect the data logger when this sign is shown on the screen. Transmission only takes a few seconds (longer in WIN NT)*



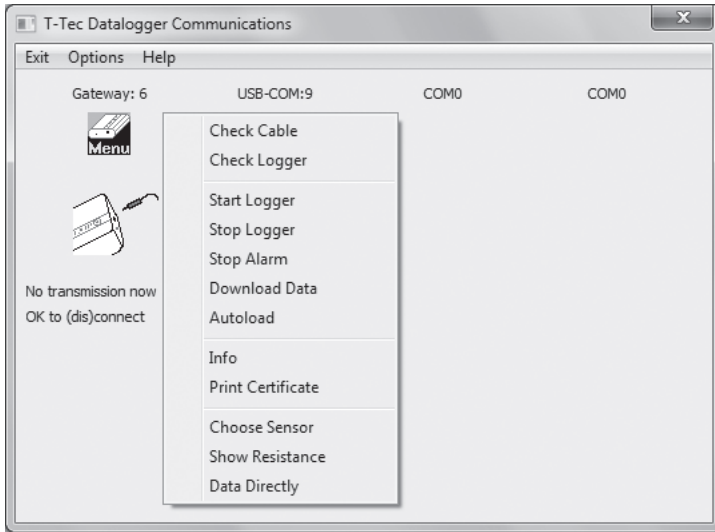
To read the T-TEC logger

In the main window of the graphics program (T-TEC Graph Viewer)

- A. Select 'Logger' and 'To T-TEC logger'. The T-TEC Communications screen appears similar to:

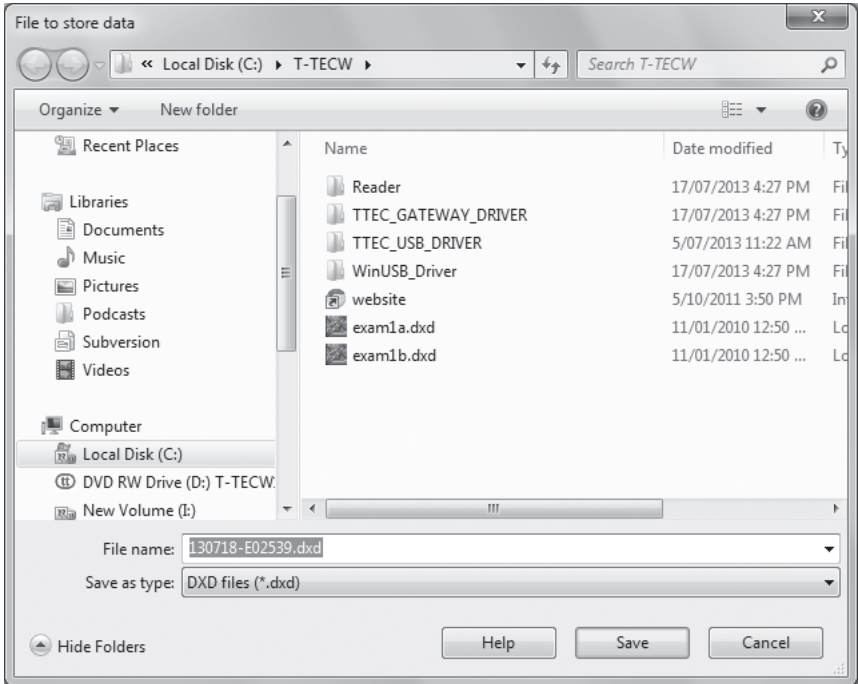


- B. Connect the logger to the cable.
- C. Click on the '**Menu**' icon to pull down the menu.



- D. Click '**Check Logger**'. The stop sign will show for a short while. The identity information held in the data logger will be displayed as well as the actual temperature of the T-TEC logger.
- E. Click menu again and click '**Autoload**' to download the file of times and measurements held in the datalogger.

- F. The data from the logger must be saved to a file first. A file window will appear. It will show a filename constructed of the year, the month, the date and the logger number. This name may be used or another name chosen with no blanks and no special characters. Click 'Save' when ready.

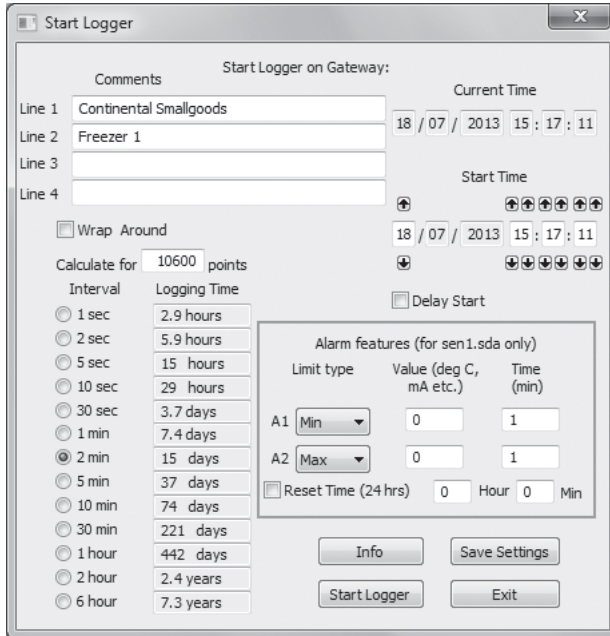


- G. The data from the logger will now be converted and shown on the graph as a curve.

To start the logger

Points A. to E. as above, then:

- H. Click 'Menu' and 'Start Logger'. The 'Start Logger' window appears.



Start Logger

Comments

Start Logger on Gateway:

Current Time

Line 1 Continental Smallgoods

Line 2 Freezer 1

Line 3

Line 4

Start Time

Wrap Around

Calculate for 10600 points

Interval Logging Time

1 sec 2.9 hours

2 sec 5.9 hours

5 sec 15 hours

10 sec 29 hours

30 sec 3.7 days

1 min 7.4 days

2 min 15 days

5 min 37 days

10 min 74 days

30 min 221 days

1 hour 442 days

2 hour 2.4 years

6 hour 7.3 years

Delay Start

Alarm features (for sen1.sda only)

Limit type	Value (deg C, mA etc.)	Time (min)
A1 Min	0	1
A2 Max	0	1

Reset Time (24 hrs) 0 Hour 0 Min

Info Save Settings

Start Logger Exit

- I. In this window set logging interval, start time, wrap around / stop when memory is full. Under comments you may type (optional) specific information for the new file the logger is going to log. (Tasks, names and places may be useful for identification later).
- J. **Current time:** The logger reads the internal clock of the computer at the time of start of logger and to get precise timing in real time, the clock in the computer should be adjusted with regular intervals - e.g., bi-monthly - depending on the accuracy of the clock.
- K. **Start time:** The logger may be started with delayed start. Using the arrows, a later time for the start may be specified, up until 1 week's delay.
- L. Alarms may be set as either minimum or maximum alarms.
Time: Grace period before alarm is triggered must be minimum 1 minute.

- M. Click **'Start Logger'** and **'Yes'** to start the logger.
- N. Wait until the stop sign disappears and exit this screen. The data logger is now logging as instructed. You can click **'Info'** to check the new settings in the data logger.
- O. **'Save Settings'** if you have many data loggers to start up with almost identical settings. The start screen will then come up with the same settings each time.
- P. If you would like hard copy of the set-up details, pull down the **'Menu'** again and click on **'Print certificate'**. The details may now be printed from Notepad.
- Q. When the stop sign disappears, disconnect the data logger from the cable. It can now be sent on its mission.

The manual is installed. Click 'Help' or 'F1' in the menu bar.

The 'Express help' in the online manual will give you information about reading and starting the logger.

The 'TUTORIAL' in the on-line manual will take you through some of the many facilities this program offers.

Tutorial

To access the Tutorial select **'Help'** from the top bar in the graphics screen, then **'Contents'** and **'Tutorial'**.

The help-text and the tutorial can stay on top of the T-TEC program so it is readable when working with the program. The tutorial will take about thirty minutes to an hour and is strongly recommended for new users.

The tutorial and any other topic in the **'Help/Manual'** can be printed out by clicking the printer icon.

Chapter 3: Operating a T-TEC RF data logger

This section assumes that you have installed the software, have a data logger and a Gateway, which is connected to the computer.

Communication with the data logger

To communicate with a T-TEC RF data logger, it must first be registered into the system via, 'Add new logger'.

Add new logger

To add a logger into the system, in the main screen, click 'Add New Logger'.

When the dialog box appears, type in the unit's serial number. The serial number can be found on the label on the back of the unit. The serial number does not include the type letter. For example, if the unit is a T-TEC 6-1C12345 the serial number is 12345.

When the serial number is entered and 'Register' is clicked, a dialog then asks, 'Do you wish to synchronise the logger?' The software is asking to be allowed to communicate to the data logger to download some details about it. If you say no at this time, it can be performed later. All that is needed is to highlight the logger in question and press the button, 'Refresh this logger only' found in the right hand corner.

Once the process is complete, the main screen is left displayed.

Once a logger is entered, then the logger can be read or started.

To start the T-TEC RF data logger

In the main screen, click on the data logger you wish to start. It will then be highlighted. Then, in the list of buttons to the left, find the button labeled, 'Start logger'. Click on 'Start logger'. A dialog box with various options will appear.

Sensor interval

Each sensor can have a different interval, so each sensor is listed individually, underneath the sensor above, with what type of sensor it is.

Choose how often you want to record (or log) the physical property (eg, temperature, humidity, etc). A line underneath tells you how long the recording may go for, based on the size of the memory onboard the device.

Delay start

Do you want to start the logger immediately, or do you want the device to start recording at a later time? If you would like the device to record at a later time, check 'Delay start' and choose the time you would like the device to start recording. This can be useful if you know the exact times you would like recorded.

Wrap around

The next choice, 'Wrap around', is about what you would like to happen once the memory is full. Do you want the logger to simply stop recording? Or do you want the data logger to 'wrap around' back to the beginning, keep recording, replacing the oldest values? If it is the former, check this option, otherwise, leave it unchecked.

Comments

There is an area that allow you to input your own comments. These can be used to help you remember settings, locations, test batches, etc. They can be anything and are not used by our software. This field is limited to 120 characters.

Location/Name

Location/Name is similar to a comment field but is used by our software. For identification purposes in the main screen, it is a good idea to give this a location or name identifier, so you can quickly tell the difference between multiple loggers in the list. It is much easier to differentiate between 'Peter's Desk' and 'Joe's Desk' as opposed to 'C-102345' and 'C-102346' in a list. This field is especially important if importing the data into DyMap.

Start the logger

Once the setup is as desired, click on the button, 'Start logger'. A confirmation dialog box will appear, asking if you want to start the specific logger. Check that it is the correct logger you are starting. If you are still happy with the setup, then

click 'Yes'. If not, then click 'No' and repeat the procedure until you have set up the correct logger with the correct configuration.

The logger can be set up for 'Automatic downloads' or you can directly Download the data once enough data points have been recorded.

To read the T-TEC RF data logger

When a wireless T-TEC logger has been started, the system is ready to return data. Note that at least three data points will be needed to create a graph, but the current data (although less than three points) is still available for viewing in TempReport via data updates on the main screen.

Download logger

First, highlight the data logger you wish to download by clicking on it in the data logger list in the main screen. Then press the button, 'Download data'. If the data logger can be contacted, then new data will be downloaded and stored in the computer. All the data from the current mission (operation) will be sent to and displayed in Graph Viewer.

In Graph Viewer, the data can be analysed statistically and can be exported to formats that spreadsheets can import. See Chapter 6: Program Facilities.

Downloading and viewing the data is the best way to see what happened after an alarm, set up via Change alarms, has occurred.

Chapter 4: How the system works

The information presented here is also available in the help file. It covers some of the features we have found are important for the user and some of the features we are asked about when the program and logger are demonstrated.

The data logger contains a measuring circuit to measure the value from a sensor, a microprocessor to convert the measurements to numerical data and a memory to store the measurements in.

The RF loggers have an antenna to transmit the measurements to a Gateway, when connected via USB port, can store the data on a computer.

The data logger is set-up with the computer and the interval between measurements is chosen. The logger is then placed into position and will work as a stand alone unit, measuring with the set interval.

The logger can be set to either collect data until the memory is full and then stop, keeping all data, or it may be set to use **'Wrap Around'** where it will go on collecting data, overwriting the oldest data.

The logger will then collect data on its own.

The logger can be re-connected to the computer and the collected measurements read from the logger to the computer where they may be displayed. The RF logger connects wirelessly via the Gateway.

Both the interface cable and the Gateway contain electronics which make it possible for a standard PC to communicate with the T-TEC logger and read the data stored in the data logger's memory.

Data Compression

T-TEC loggers use data compression for the data in the memory of the logger. The memory can then contain a greater number of measurements. The more constant the measurements are, the larger number of measurements the logger can keep. This is the reason we cannot give a fixed number of data a logger can contain.

This exception to this are the C-loggers which do not work with data compression and can store a fixed number, (3,100 sets of measurements for older loggers and 10,600 sets for newer loggers) and F-loggers which can store a total of 21,000 measurements.

The Files - T-TEC Logger

When the computer reads the memory in the T-TEC logger, it creates a file with the extension 'DXD'. This is a complete copy of the data in the logger's memory and is in compressed format. To make it useful, it must be converted to a more readable format and the T-TEC program has facilities for this with the '**Convert**' procedures in the '**Logger**' menu.

To make it easy, the '**Autoload**' procedure will automatically convert new DXD files and create a file with the same name as the DXD file but with the extension '.DTA'.

Both DXD files and DTA files are saved on the computer's hard disk and remain until they are removed by the user.

DXD files are small, from 2,000 to 32,000 bytes. Files with extension '.DTA' are much larger and may be up to 700,000 bytes long. The program stores both file types from a T-TEC logger. It is easy for a user to make a backup copy of the DXD files. DTA data files can always be re-created with the '**Convert**' procedures. The DTA files are used for creating files suitable for export to spreadsheet programs.

Data from the iButton will be converted to a DTA file directly and no DXD file is created. This is true for both the iButton or TempTec Reader Communication Software. For iButtons, either via the iButton Communication software or the TempTecR Communication software, the DTA files must be saved by the user.

The Files - T-TEC RF Logger

The software saves the raw data in an internal database, saving the data to files with extension of 'dta' only when requested. These files are text files and can be

read by Notepad. The data can also be exported to Comma-Separated-Values (CSV) for import in spreadsheet software in Graph Viewer.

Code of Federal Regulations title 21 part 11 (US)

The data loggers that comply with CFR 21 part 11 are those with fixed sensors: the T-TEC E (types 1 and 2), all T-TEC Pt100, all T-TEC C, and all iButtons. Models that have remote sensors are non-compliant.

Data logger with external sensor

Different thermistor sensors will give different measuring ranges for the T-TEC data loggers. For example, a standard sensor (Type 1) will measure from -40 to +85 degrees Celsius and a T-TEC type 2 sensor from -100 to +20 °C.

If the datalogger has a fixed or Pt100 sensor, the programs will detect the type of sensor and behave accordingly. If the logger uses an external thermistor sensor, then the sensor must be specified to the program.

See '**Choose Sensor**' in the installed manual.

Sensor files (.SDA files)

These sensor files are for the T-TEC loggers, not the T-TEC RF. The T-TEC RF now have these sensor files onboard.

The sensor is defined with values kept in a sensor file, e.g.,

sen1.sda for the standard temperature sensor (T1) range -40 +85°C

sen2.sda for the low temperature sensor (T2) -100 +20°C

sen6.sda for the high temperature sensor (T6) +20 +160°C

You can use your own thermistors if you so desire and create a sensor definition file yourself - see '**Help**' in the program under '**Advanced Topics**' > '**Thermistor sensors**'.

Defective Sensors

A short circuited sensor will show a very high temperature and an open circuit sensor will show -273 °C.

Alarms

T-TEC Type 6 and 7 loggers (except loggers for humidity) contain an alarm function. Two alarm temperatures may be set when the logger is started, either as a maximum (alarm if temperature exceeds a set limit) or as minimum (alarm if the temperature falls below a set limit), and an individual delay time may be set for each alarm.

If an alarm is triggered, a T-TEC 6 data logger will indicate this with 'beeps': one beep if alarm1 has been triggered, two beeps if alarm2 has been triggered and three beeps if both alarms have been triggered. A T-TEC 7 data logger will show 'A1' if alarm1 has been triggered, 'A2' if alarm 2 has been triggered and 'A12' if both alarms have been triggered.

The beeping may be stopped by connecting the logger to the PC and choosing '**Stop Alarm**' in the menu in the Communications Program.

An automatic reset may be activated when the logger is started. This will reset the alarm and the counters for delay(s) at a set time once a day. For example, the function may be used to avoid an alarm situation during automatic defrost of freezers.

Note: Alarm temperatures refer **only** to sensor type 1 or 2. If another sensor is used, the settings will be incorrect, except for models marked L.

Note: For T-TEC Data loggers type F with 2 channels, the alarm function works on sensor 1 only.

Relay output

If you have a T-TEC data logger with relay output, please refer to the instruction note in the box for the specific function.

A 3-wire cable for relay connection is provided. The relay connects the black and blue wires in reset and the black and brown wires in alarm.

Maximum load (resistive) for the relay: 1A 30V DC, 0.5A 125V AC.

Relay Output for T-TEC RF Loggers

The relay output for the RF loggers has been placed on board the Gateway. Thus, all loggers can send alarms to the Gateway, which in turn can set the relay. The relay can be reset via the software. Once a Gateway is set up, it can be placed into location (with its own power source) for relay purposes. A second Gateway, attached to a computer, can be used to change the settings on any number of data loggers at any time.

Number of measurements for a logger

The data sheets show the expected number for a specific logger type.

Logging Intervals

In **'Start Logger'** there is a calculator. If the user types in the expected number of measurements (depends on logger type) the calculator will show how long a time the data logger can log for at different time intervals. Data loggers with data compression can contain more measurements if the measurements are much the same or only vary slowly.

For example, the temperature in a commercial freezer may vary from -23 to -20°C, a variation of 3 degrees Celsius. Each cycle (top-to-top) may take around 1 hour. Compared to the logger measuring range of -40 to +70 °C, the variations are small, from top to bottom around 3%. Here we have registered around 28,000 to 30,000 measurements (logger type E) when setting the logger to 1 or 2 second intervals. The number of stored measurements will be less with longer intervals as the temperature will vary more between each measurement.

The following table may also be used:

Logging duration at different intervals

Interval	3,000 logs	1,200 logs	20,000 logs	100,000 logs [‡]
1 sec	50 min	3.3 min	5.6 hours	27 hours
2 sec	1.7 hour	6.7 hours	11 hours	2 days
5 sec	4.2 hours	17 hours	28 hours	5.5 days
10 sec	8.3 hours	33 hours	2.3 days	11.5 days
15 sec [†]	N/A	N/A	N/A	17 days
30 sec	25 hours	4.2 days	6.9 days	34 days
1 min	2.1 days	8.3 days	14 days	69 days
2 min	4.5 days	17 days	28 days	138 days
5 min	10 days	42 days	69 days	347 days
10 min	21 days	83 days	169 days	1.9 years
15 min [†]	N/A	N/A	N/A	2.5 years
30 min	62 days	250 days	417 days	(5.5 years)
1 hour	125 days	500 days	2.3 years	(11 years)
2 hour	250 days	2.7 years	(4.6 years)	(22.5 years)
6 hour	2.1 years	(8.2 [†] years)		(68 years)

[†] Battery lifetime may be shorter for some types.

[‡] T-TEC RF only

Logging intervals for iButtons

A ds1921 ThermoChron can store 2048 measurements. ds1922s can store either 4,096 or 8,192 measurements, depending on resolution. Similarly, ds1923s can store either 2,048 or 4,096 measurement pairs (temperature and humidity).

Logging intervals for T-TEC RF

The logging intervals for the T-TEC RF is very similar to the standard T-TEC with two additions (15 seconds and 15 minutes intervals). Time lengths in brackets are theoretical only as the battery within the data logger will not continue for that length of time. The total number of logs in a new RF logger has been very conservatively estimated at 100,000 logs, however, due to data compression, the actual number of logs will change from mission to mission.

Stop logging

The logger stops logging when:

- The memory is full and the logger is set to stop at full memory,
- The 'Stop Logger' function is selected in the communications program.

The logger does **not** stop because it is connected to the computer and/or the memory in the logger is read. All communications happens in between the logger recording measurements. It may be set to log each second and can still be read without disturbing the logging.

It is not necessary to stop logging when a T-TEC logger is read or restarted. A T-TEC RF logger needs to be stopped before being restarted.

Erasure of data in memory

When the data logger starts a new measuring cycle, the microprocessor in the logger resets all references to the existing data in the memory and the old data cannot be recovered. The new data then simply overwrites the old.

More loggers can work together

Sometimes one logger may tell what happened and another may tell why it happened.

Example Ex2-2 later shows results from two loggers working together. One logger is placed with the goods, another logger is placed to read the ambient temperature.

The first logger shows the temperature of the goods, the second shows why the temperature of the goods varied.

Graph Viewer can show up to eight graphs at the same time. When calendar time is selected as the time scale, all loggers show what happened at the same time - six o'clock for one logger is also six o'clock for the other loggers. The loggers will then work together as a multichannel logger. There is no need to interconnect the loggers. Neither do the loggers need to be started at precisely the same time, as long as the measurements overlap in time. The computer synchronises all graphs

to the computer's clock at the time of start of the loggers with a tolerance of ± 1 second.

Printing and export of files

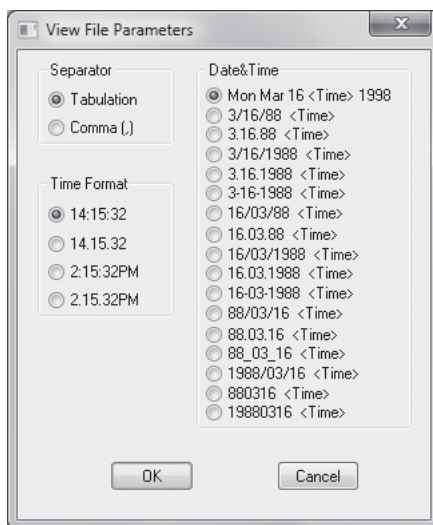
To get a list of measurements and times go to: **'File' > 'List File'** This creates a list which includes all the data from the file. The data appear on the screen using 'Notepad', 'Write' or 'Wordpad', depending on the operating system.

To limit the amount of data it is recommended to first zoom in on the important part of the file and then use: List curve.

'File' > 'List Curve' makes a list where only data seen on the screen are included.

The lists can be printed or saved to a file for later printing. The filename of a list has the same filename as the datafile with the extension .txt instead of .DTA. This file may be opened by spreadsheet programs. You will be given the option of where to save the .txt file.

The format of the list can be chosen so that export to spreadsheet programs like Excel is as easy as possible.



Please be aware that the graphs for the new T-TEC RF loggers can contain **many** datapoints and thus may result in a large exported file. Please check the requirements of the spreadsheet software to ensure it can handle the data size.

Saving the graph for inclusion in reports or email

For inclusion in reports or emails you may want to design the looks of the graph using **'zoom'**, **'add comments'**, **'add y-line'** etc.

To save the graph as it looks on the screen in a graphic format that may be inserted into word processor programs or sent as attachments to emails, go to:

'File' > 'Export as .PNG'

You will be given the option of where to save the file.

PNG stands for Portable Network Graphic and is an ISO standard. It is similar to a normal image, and can be used in email, web browsers, word processors, and so forth, just like any other image.

Chapter 5: Batteries

How long can the battery last?

This depends upon the type of logger, how often it measures and 'the circumstances'.

Expected battery life

Replaceable by user:

T-TEC 501 manufactured before September 1998: 10 months

T-TEC 501 manufactured after September 1998: more than 2 years.

T-TEC 6: 3.5 to 4 years

T-TEC 7: approximately 2 years.

T-TEC RF 6 & 7: once a year (depending on setup)

TempTec 816: battery should be changed once a year.

T-TEC RF 6: 2 years

T-TEC RF 7: 1 year

Batteries in iButtons are not replaceable.

Ds1921: 5-10 years, depending on the use and the temperatures:

In a freezer 2-3 years

In a refrigerator 5-6 years

In room temperatures 6-8 years.

Ds1922 and Ds193: **2 days** to 10 years.

VERY IMPORTANT NOTE:

The Ds1922 and Ds1923 will have a very short life period (2 days) if set to log at fast intervals (less than 60 seconds) and at a high resolution. We recommend that energy conservation is considered in the set up of the logger, so low resolution and longer intervals are chosen.

Current battery voltage

The 'Check Logger' function in the communications program will display the actual battery voltage.

The battery voltage of a T-TEC RF is shown in the information panel for that data logger in TempReport .

T-TEC 501 series uses two batteries, 3v lithium manganese batteries type CR2450. Type 6 and 7 use one battery, ½ AA 3.6v lithium thionyl. TempTec 816 uses one battery, AA 3.6V Lithium

Replacing batteries

If the batteries need replacement, it is recommended to change batteries before a long measuring series.

A change of batteries in a logger containing data may result in loss of some of the newest data but the majority may be read after a change of batteries. An exception is earlier loggers of type B where all data will be lost.

A logger set to '**Wrap around**' will lose the correct start time when reset is pressed or batteries are replaced, and show a start time of 1st of January, 1970.

Access to the batteries

Type 501

Remove the screw in the rear and the rear plate to get access to the battery. The narrow side of the coin type battery is negative and should turn towards the printed circuit.

Type 6 & 7

Remove the two screws in the sides and pull the two sections apart. When assembling the case: take great care that the instrument is completely dry and that the O-ring is properly placed in the groove. Fasten the screws so the two parts just meet at the sides with the screws — do not over tighten.

The ½AA type is marked + and -. Check with the markings on the battery holder to secure the battery is mounted the right way. A battery inserted the wrong way round will be drained fast. It will not damage the instrument.

TempTec 816

Battery cover is found at the side of the casing. The + side of the battery must face the battery cover.

Logger reset

When a new battery is inserted the logger responds with 3 beeps. If you do not hear the beeps, it is necessary to press the switch marked reset inside the logger. The logger then resets, checks its batteries and makes three beeps or blinks if all is OK.

A T-TEC RF logger has a timeframe within which the operations of the logger itself will not be disturbed if the battery is replaced quickly (half an hour). If this is the case, the logger does not need to be reset.

Some newer logger types have 2 reset pins instead of the switch. A reset is done for these by removing the battery and then shorting the two pins. Reset — and three beeps — will then be executed.

Chapter 6: Program facilities

The following examples show measurements from 2with the loggers and how the graphic program may be used to extract relevant information from the data.

Example 1 shows how to use the **'zoom'** and the **'plot'** function to set the graph as required.

Example 2 is a simple measurement on a domestic freezer. It shows the use of two loggers, one with internal sensor and one with fixed external sensor. This example is based on the two files (Exam1a and Exam1b) supplied with the distribution disk.

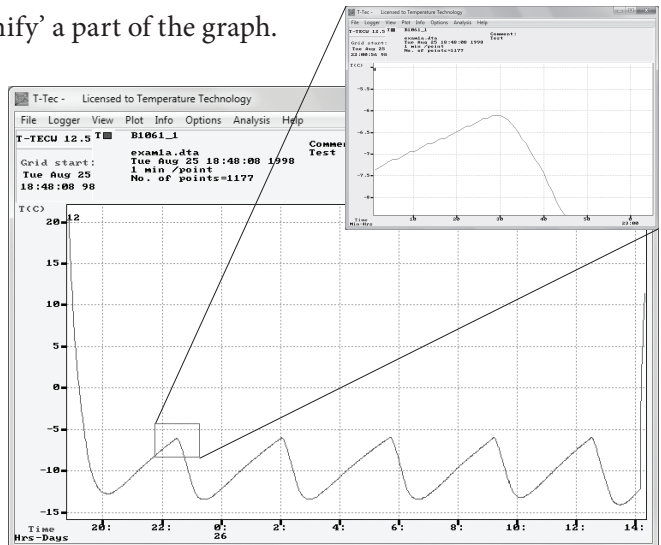
Example 3 shows the result from a shipment of meat from Adelaide to Geneva in Switzerland. Two logger are used, one logger measures the temperature of the goods, the other ambient temperatures to try to see why the temperature in the goods changes.

Example 4 is based on measurements in our store room for a period of eight months and shows use of 'Smooth curve' or moving average.

'Zoom' & 'Plot'

'View' > 'Zoom' can 'magnify' a part of the graph.

Select **'Zoom'**. Move the cursor to a point on the graph that should be the left bottom corner of the zoomed graph, press the left mouse button and hold it down. Drag the mouse until the box contains the part to be magnified. Then release the mouse button. The



area of the graph inside the box is now magnified and it is easier to see the exact degrees and times.

Plot

This function is used for designing the graph for printing. The program auto-scales the graph to fit the curve/s that are currently showing.

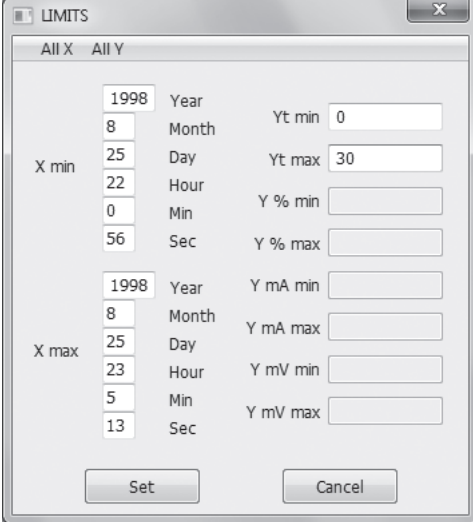
For comparison between printed curves, it may be preferable to have all the graphs using the same scales.

To do so, we first clear the graph of data, noting that the data is still stored within the software. We will bring the data back up later.

Click **'Plot'**, then **'Clear'**.

Click **'Limits'**. In **'Limits'** you can set the scale (in the example minimum 0 and maximum 30°C) and the time range you want displayed on the graph.

Click **'Set'**, and you are returned to the **'Plot'** menu. From here, click **'Scale X'** and **'Scale Y'** to display the X and Y graph axes. Click **'Plot Curve'** and individually select each curve you would like displayed on the graph. The graph will appear as you have designed it.



Section	Year	Month	Day	Hour	Min	Sec	Yt min	Yt max	Y % min	Y % max	Y mA min	Y mA max	Y mV min	Y mV max
X min	1998	8	25	22	0	56	0	30						
X max	1998	8	25	23	5	13								

Measurements from a freezer

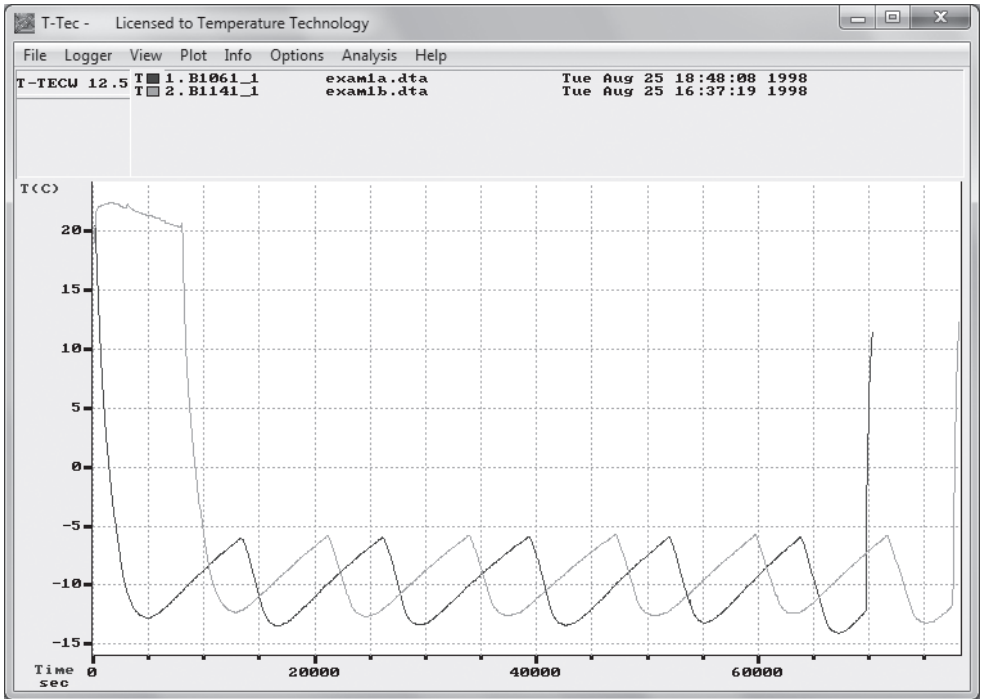


Figure Example 2.1

The two loggers used: B1061 has a fixed external sensor and B1141 an internal sensor. Logger B1141 is started approximately 2 hours after logger B1061. Both loggers are set to measure once each minute.

After both loggers were started, they were placed side-by-side inside a domestic freezer and left there overnight. When the loggers were read the next day, the files were called Exam1A and Exam1B.

The two files are included in the distribution disk and may be used to try some of the features of the program.

The graph shows the raw data — the graph you will get when the files are loaded to the graph. To get these curves on to your screen, click **'File' > 'Load Curve'** for Exam1A.dta and **'File' > 'Autoload first 8'** to get the Exam1B file to the screen.

Exam1A is converted on the distribution disk, Exam1B is not (see the online manual [press F1] regarding file types).

Understanding the graph

The graph shows the temperatures to the left and the time for measurements along the bottom.

At the top of the graph there is a line with the words 'File', 'Logger', and so on, which are pull-down menus. A click on any of these words will give access to groups of functions.

Below this line is a field to the left divided in two parts: the top part shows the software version and the second is blank now.

To the right is another field which shows the file names and data logger identifications for the curves on the screen.

In case of one curve only, the field would show all details from the logger with time interval, number of points, etc. With more than one curve on the screen, the information is reduced as shown here.

Full information about the curves can be found under '**Info**' in the top bar.

The small rectangles at the left show T for temperature and H for humidity and the colour code for each curve.

The format with the time scale in seconds (or minutes or hours) from the start of the logger is very useful if measurements taken at different times are to be compared, eg. before and after a repair, or summer compared to winter.

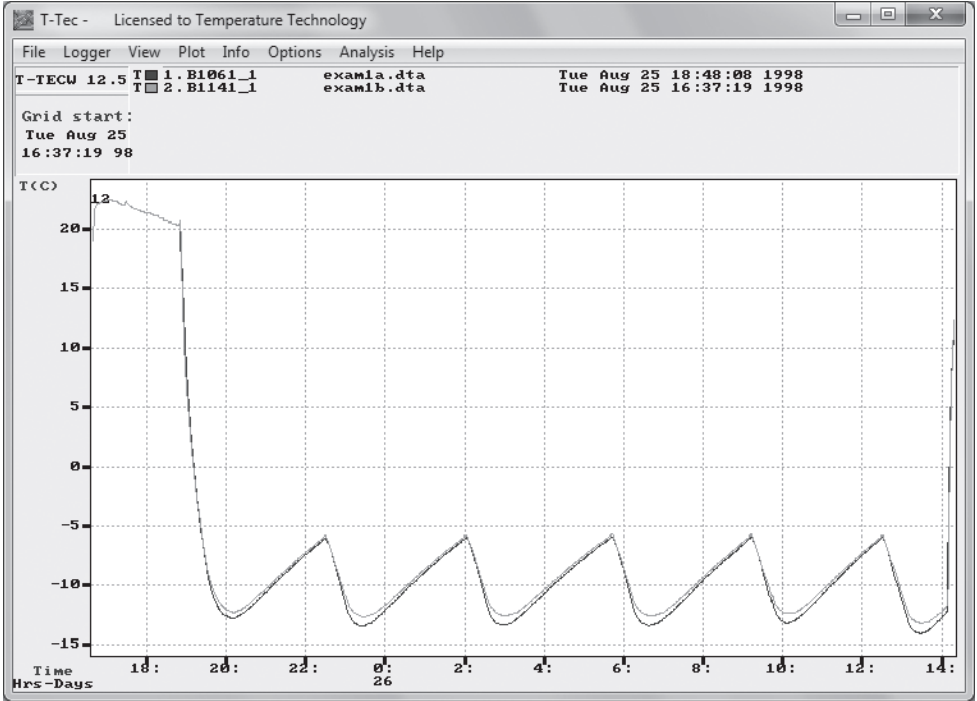


Figure Example 2.2

To get real time (month, day, hour, etc) click on ‘View’ in top bar and then ‘Time Scales’ > ‘Calendar’.

The graph will change to above picture. The bottom of the top left field will now show the time for the start of the graph.

The numbers just under the graph show the time of the day in 24-hour format. The line below shows day in the month as shown by the legend to the left.

The time intervals on the graph will be set so the graph can show all data from the logger. It could be months, days or minutes, seconds.

When the graph is changed to calendar time — real time — then six o'clock for one logger is also six o'clock for another logger. The loggers will therefore be synchronised in time and more loggers can work together as a multichannel logger.

As shown on figure example 2.2, it is not necessary that the loggers start at the same time. One logger in this example was started several hours after the first. The software in the computer is able to synchronise the graphs as long as the measurements overlap in time.

Up to 8 curves may be shown together on the graph.

'Analysis' > 'Statistics'

This will drop a window with minimum, average and maximum values for the part of the curves that can be seen on the graph. Measurement values not shown on the graph are not included in the calculation.

Here, the average shows to be very close for the two loggers and the difference in minimum and maximum values shows the difference in time constants for the two loggers.

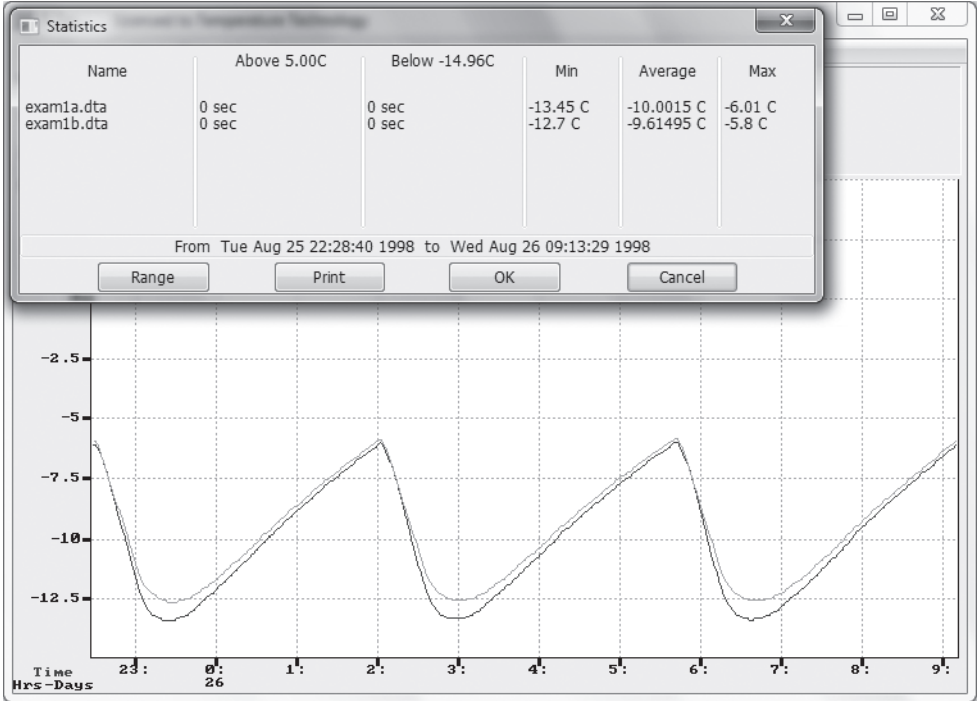


Figure Example 2.3

The curve Exam1B has been removed to get a simpler picture. ('File' > 'Close Curve'), the curve has been zoomed again and 'Analysis' > 'Load Factor' chosen.

The curve is now overlaid with another curve made of straight lines which averages the cycles. As described in the on-line help (Press F1 and use key word 'Load Factor'), the overlaid curve can be manipulated to follow the original curve.

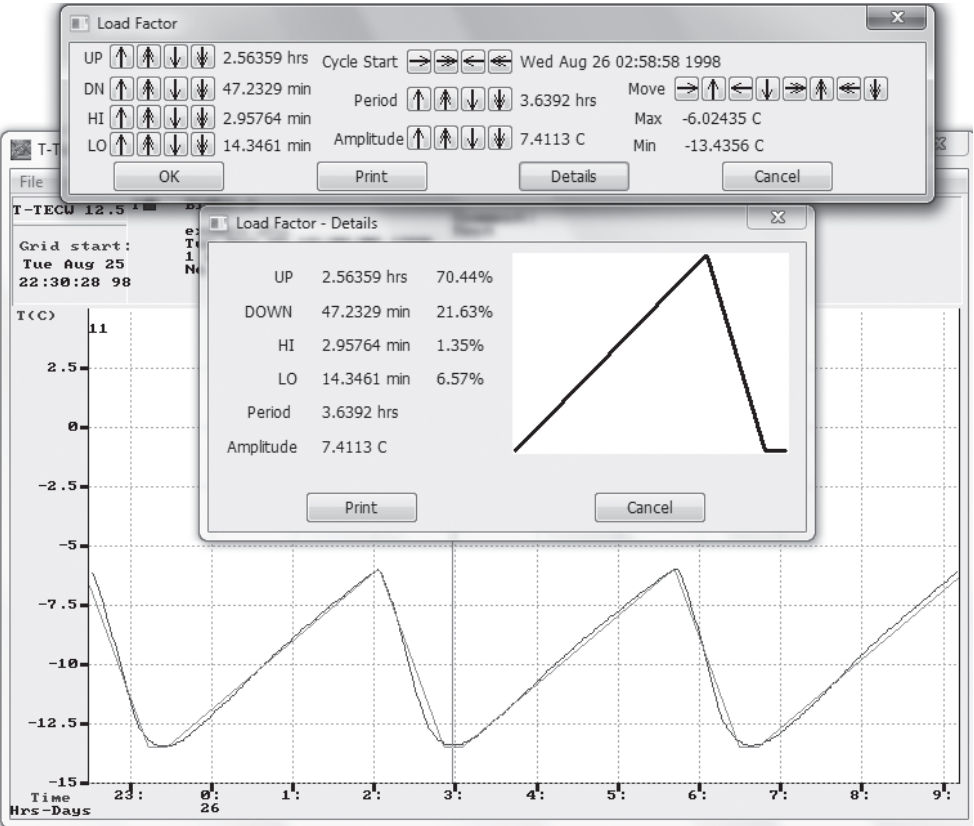


Figure Example 2.4

The overlaid curve is now modified to follow the cycle from 3 to 6.30 AM and 'Details' is used to get further information about the behaviour of the freezer.

The period time (from top to top) is 3.6 hours, the amplitude (difference between warmest and coldest point) is 7.4 °C. If the compressor starts when the temperature stops rising and stops when the temperature stops falling, then the compressor has been on for 23 % (21.63+1.35) and off for 77% of the time.

Example 3: A shipment of chilled meat

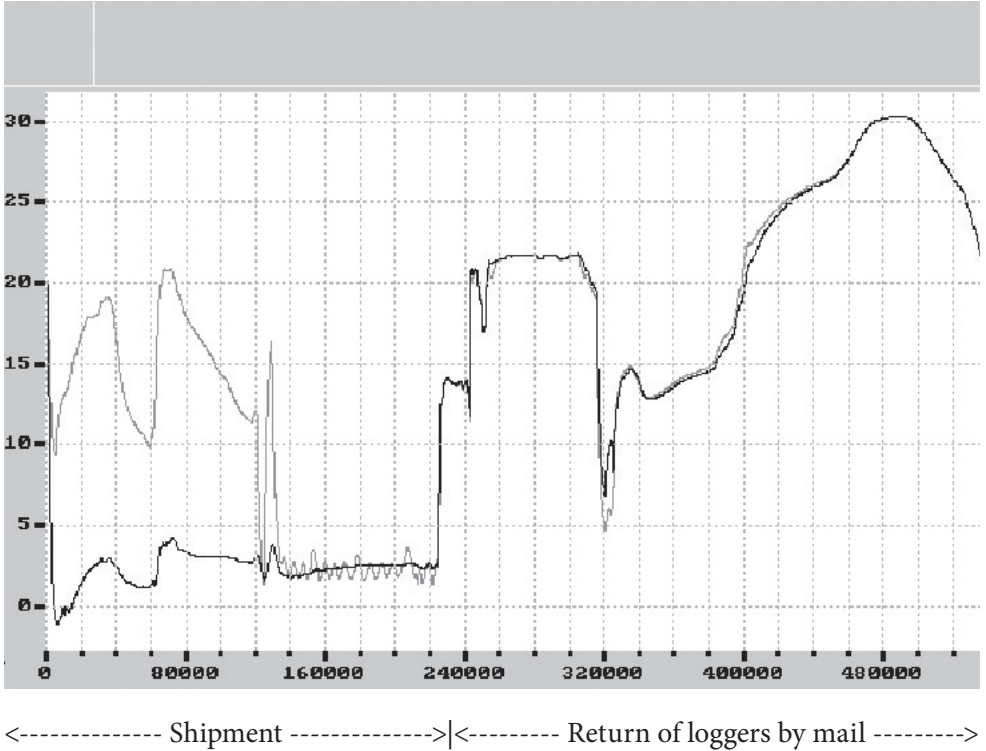


Figure Example 3.1

Meat packed into an insulated aircraft container. Two loggers used. One outside on a box inside insulation (B236). One outside insulation (B237). Raw data as read from logger after return in a jiffy bag. Time scale is seconds from the start of loggers.

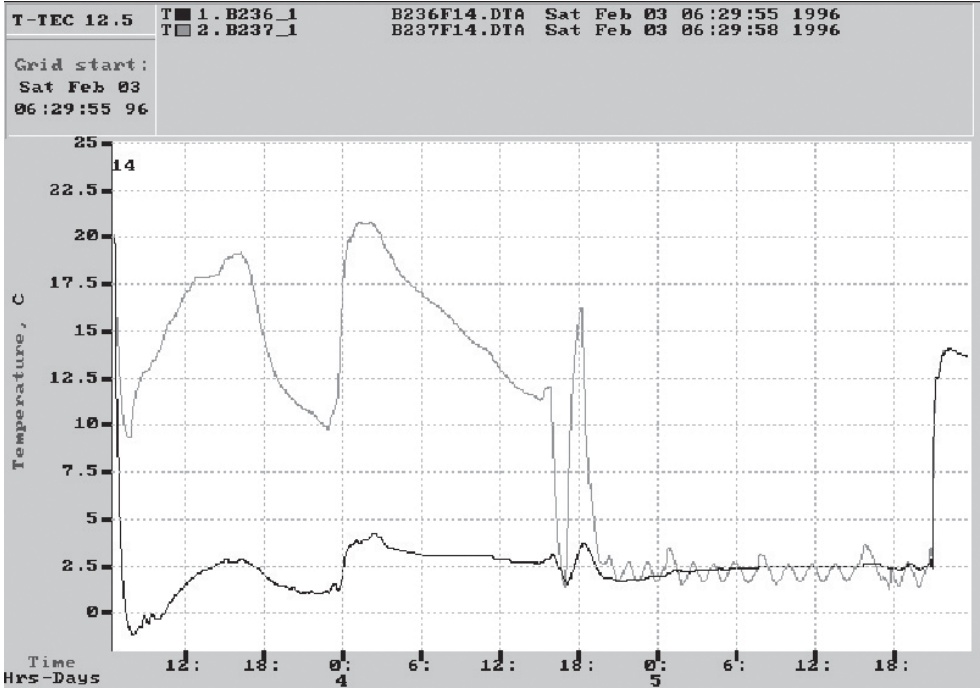


Figure Example 3.2

- A. 'View' > 'Time Scales' > 'Calendar' to change to real time with days and hours.
- B. 'View' > 'Zoom' to cut off information from the return mail.

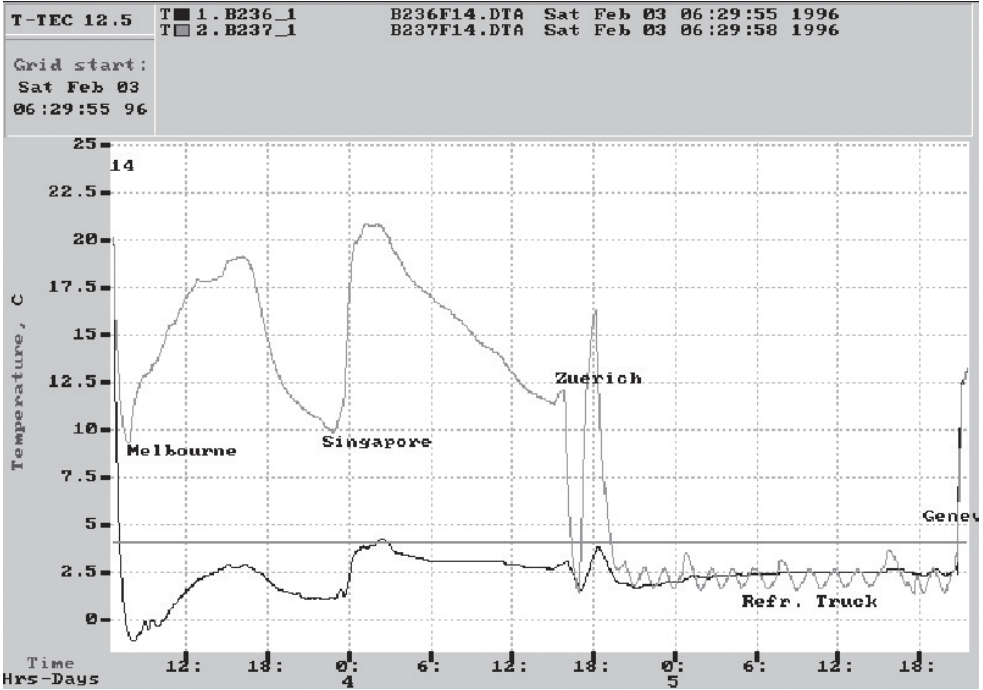
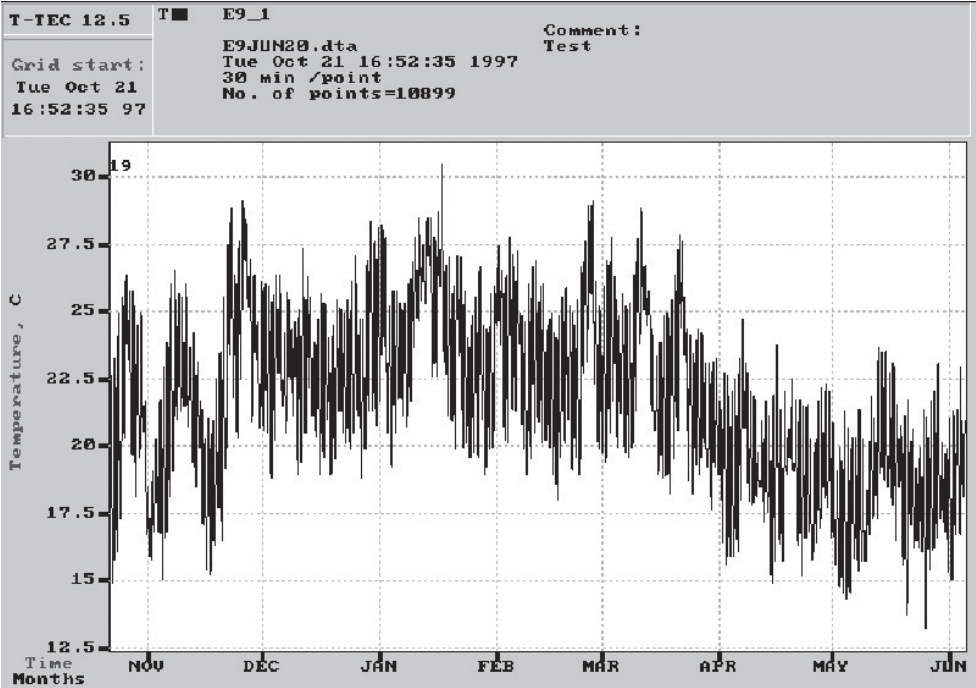


Figure Example 3.3

- C. 'View' > 'Add Y line', 4 °C
- D. 'View' > 'Add Comments' for locations. (matched with data from airlines.)

The shipment leaves Adelaide for Melbourne (temperature falls during flight) and the cargo is left on the tarmac in Melbourne for approximately 10 hours. The next flight goes to Singapore where it is quickly loaded into a plane with destination Zurich. It is winter and cold in Zurich. The meat is loaded on a refrigerated truck in a warehouse and driven to Geneva.



Store room temperatures

Figure Example 4.1

Temperatures in store room over eight months. 'Time Scale' set to 'Calendar' time, otherwise raw data.

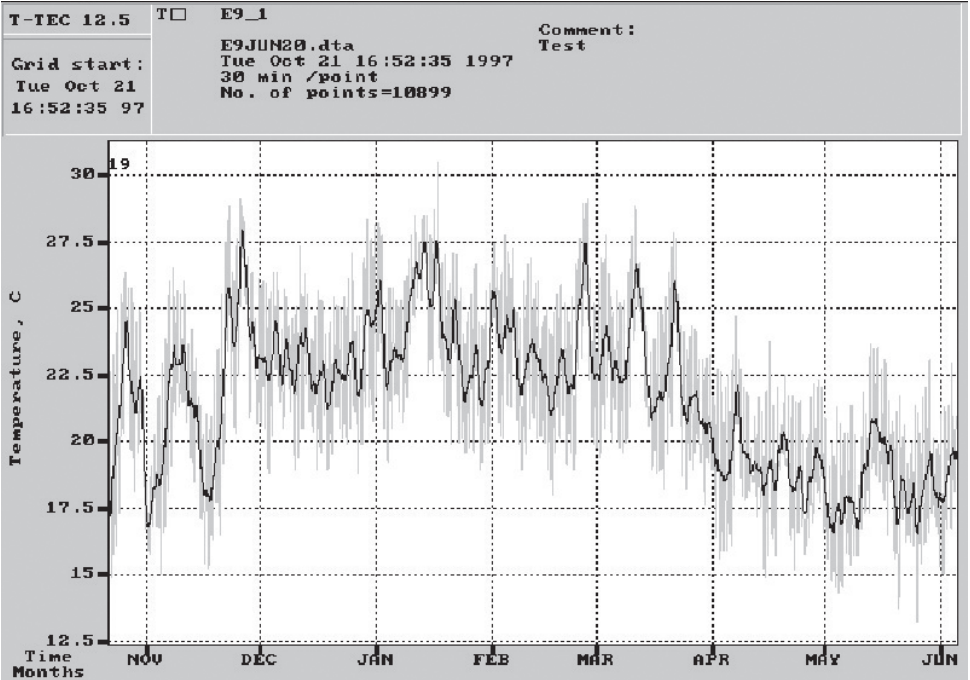


Figure Example 4.2

- A. 'Options' > 'Graph Colours' used to change curve to light grey.
- B. 'View' > 'Smooth' used to show moving average (or trend). Smooth factor set to 24, which with 30 minutes between measurements gives a 24-hour moving average.

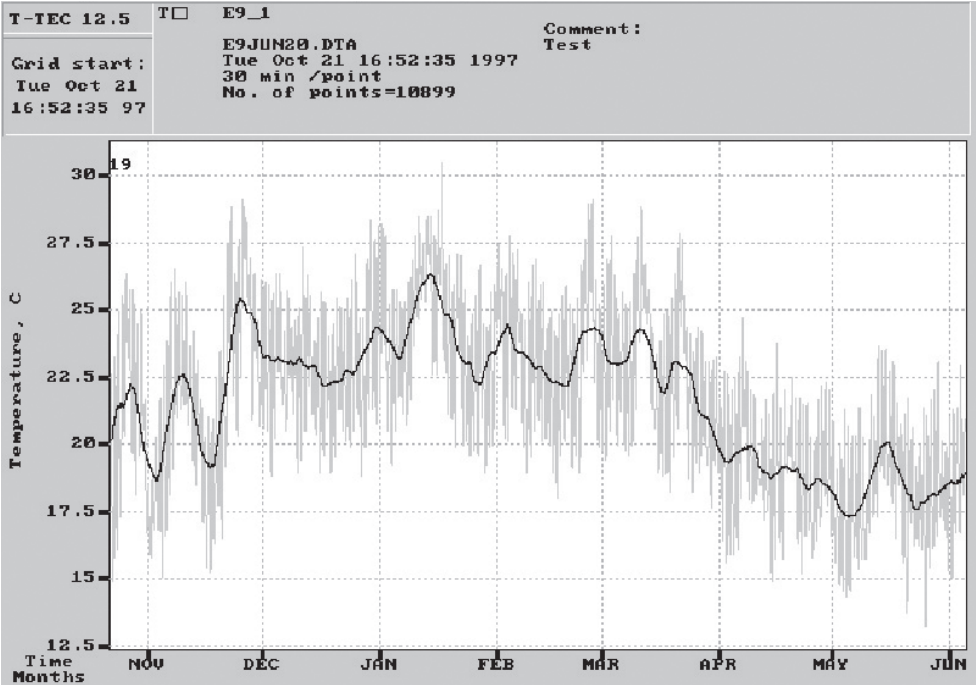


Fig Ex4-3.

As Figure Example 4.2 but ‘Smooth’ factor set to 168 to give a weekly moving average.

Index

- A**
- alarms 22
 - analysis 36
 - autoload 20
- B**
- batteries 28
 - access 29
 - current voltage 28
 - replace 29
- C**
- CFR 21 part 11 21
 - clear 32
 - configuration
 - iButton data logger 9
 - programs 8
 - temp tec reader 9
 - t tec data logger 8
- D**
- data
 - erasure 25
 - list 26
 - data compression 19
- F**
- files
 - .dta 20, 26
 - .dxd 20
 - .sda 21
 - freezer
 - domestic 31, 33
- G**
- graph
 - basics 34
 - export 26
 - graph colours 43
- H**
- help
 - express 11
- I**
- info 34
- L**
- list
 - data. *See also* data list
 - measurements. *See also* data list
 - load factor 37
 - logging
 - intervals/times 23
- M**
- measurements
 - limits/total 23
 - memory 19
- P**
- plot 31
 - printing 26, 32
- R**
- Relay output 22

S

save	
data list	26
graph	26
iButton data	20
settings	15
TTEC configuration	9
TTEC logger data	13
sensors	
custom	21
defective	22
external	21
files	21
thermistor	21
smooth. <i>See also</i> statistics moving average	
smooth curve	31, 43
start	
program	10
TTEC logger	11, 13, 23
statistics	
moving average	43
Stop	
TTEC logger	25
synchronise	
logger time	25, 35

T

table	
duration. <i>See also</i> logging time table	
time Scales	35, 40
tutorial	iii, 11, 15

U

USB driver	8
------------	---

V

view		35
add comments		41
add Y line		41
smooth		43
time scales		
calendar	35, 40	
zoom		31, 40

W

Win	
2000	8
Vista	iii
XP	8
wrap around	14, 19, 29

Z

zoom	26, 31
------	--------